



Bayridge Farm
Troy, Virginia





Bayridge Farm

A short drive from Charlottesville, Bayridge Farm is a hidden gem offering everything you need for convenient living on a horse farm.

Nestled into a rise on a charming scenic road, the home has views of rolling land and a winding stream. The property was thoughtfully designed as a horse farm on 12.2 acres with 10.41 acres in Albemarle and 1.79 acres in Fluvanna County. The horse facilities consist of a four-stall center aisle barn with hay storage, a wash stall, and a heated tack room. In addition, there is a second three-stall row barn, five paddocks, two run-in sheds, and a pond.

The single-level home, built for easy living, has a wonderful screened porch to enjoy evenings with friends and family and is accessed through the living room and the kitchen for ease of entertaining. The kitchen is spacious with a center island and breakfast nook. The living room with a wood stove overlooks the property.

The primary suite is spacious, with a walk-in closet and a deck overlooking the farm. The primary bath has a double vanity and whirlpool tub. On the opposite side of the house are three additional large bedrooms with two bathrooms.

There is a detached oversized two-car garage lined on one side with blueberry bushes. Entry from the garage is through the garden gate into the screened porch.

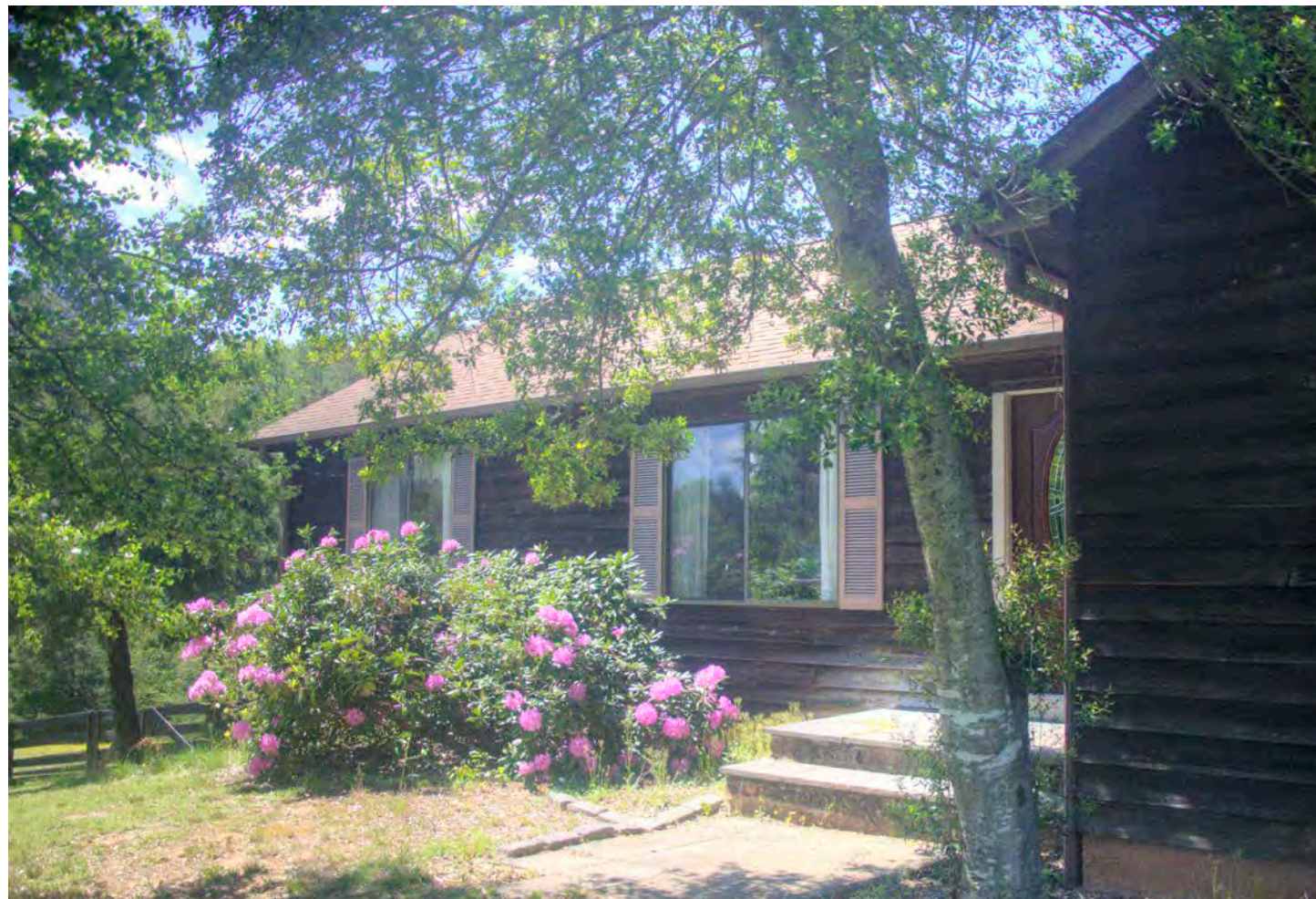
Firefly internet is available. The current owner has Direct TV and uses Century Link DSL.

Conveniently located near I64 and Rt 250 in Troy off Union Mills Road, this farm is an easy commute to Richmond and just down the road from Pantops in Charlottesville.

The farm is sold "as is." Inspections are welcome for informational purposes only.



The Garage



Tool Shed





Living Room



Primary Suite











MAIN HOUSE HAS 4 BEDROOMS AND 3 BATHS

SCREEN PORCH

OVERSIZED GARAGE

4 STALL CENTER AISLE BARN

WASH BAY

HEATED TACK ROOM

SECOND 3 STALL BARN

2 RUN IN SHEDS

FIVE PADDOCKS

POND

STREAM





LISTING AGENTS

Bridget Archer 434-981-4149

Pam Dent 434-960-0160

Gayle Harvey Real Estate, Inc.

LISTING & SELLING

Farms | Estates | Lifestyle Homes